

# Door Striker Fitment Issue

Customer: Patrick Brunelle

84-88 Door Striker Bolt  
Part # 64563

Web Order #134787  
Order Date: 11/26/2017

# Background Information


- 1985 Fiero SE 2M6, no known accident history
- Car is in good overall condition, but the door strikers were very slightly worn, therefore, I decided to replace the door strikers with new ones described as GM originals:

[ing Info](#) | [R & D](#) | [Tech](#) | [Fieros For Sale](#) | [Media](#) | [Contact Us](#)

---

**Product Detail**

---



**84-88 Door Striker Bolt**  
Replace your worn striker bolt with this GM original.  
Part # 64563      Price: \$9.95      Qty:   
[Add To Cart](#)

---

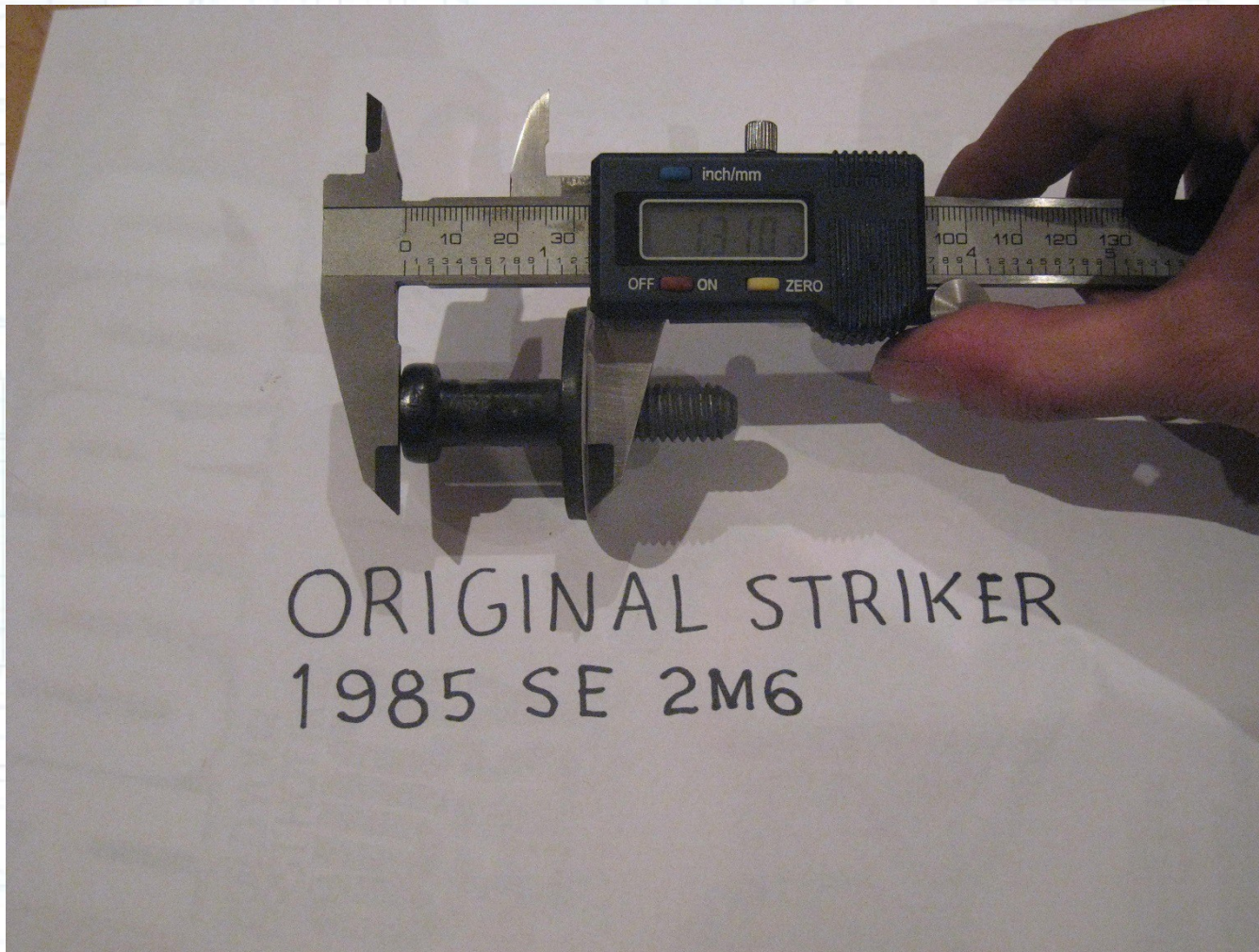
**May we also suggest**

- When I installed the new door strikers, the doors no longer operated correctly.
- There was too much friction when opening/closing the doors.



# Factory Striker (pt. 1)

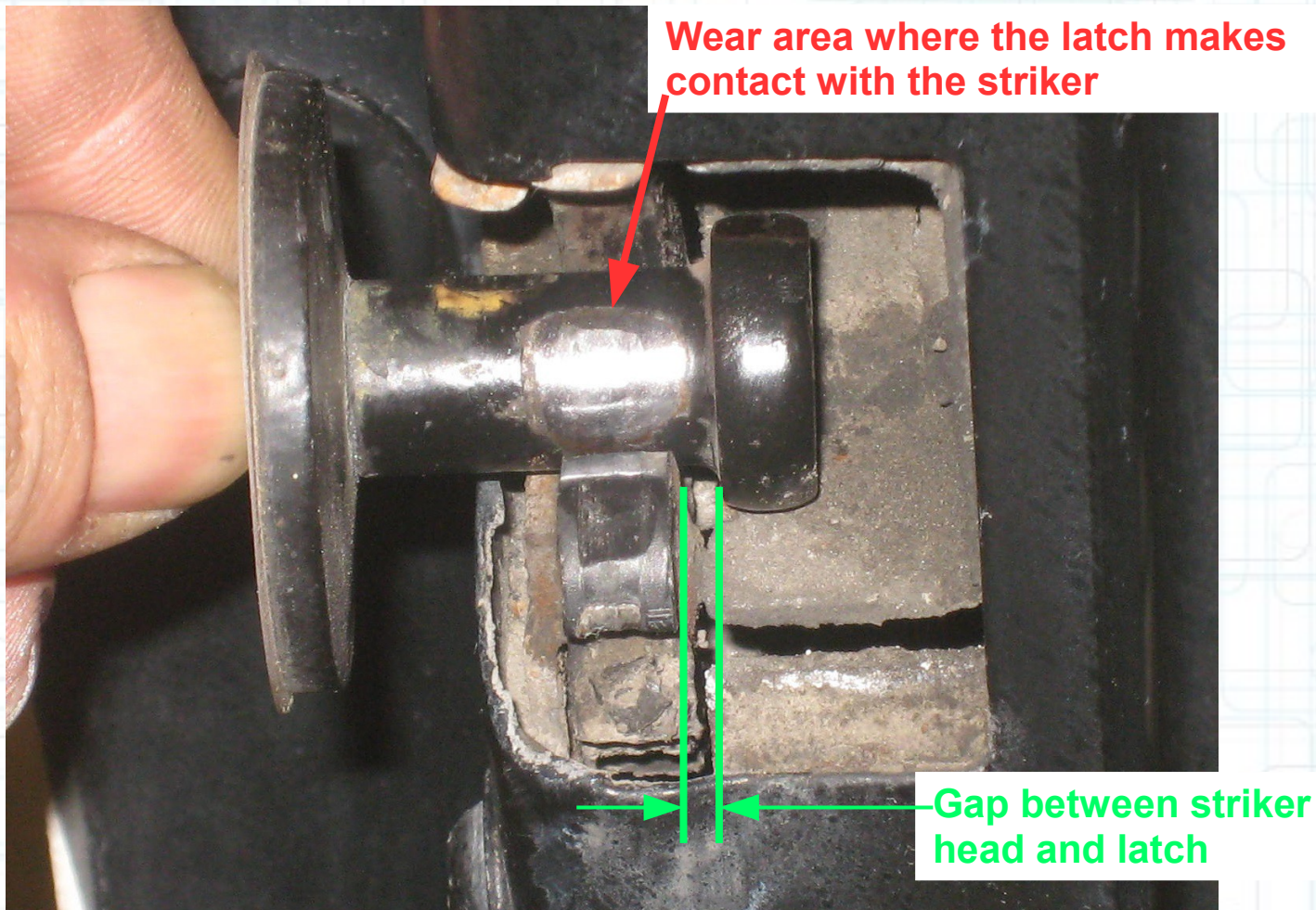
- Overall length: 1.310"





# Factory Striker (pt. 2)

- Driver's side, striker placed inside door latch





# Fiero Store Striker (pt. 1)

- Overall length: 1.193"





# Fiero Store Striker (pt. 2)

- Application of Liquid Paper to the driver's side latch (flipped up)

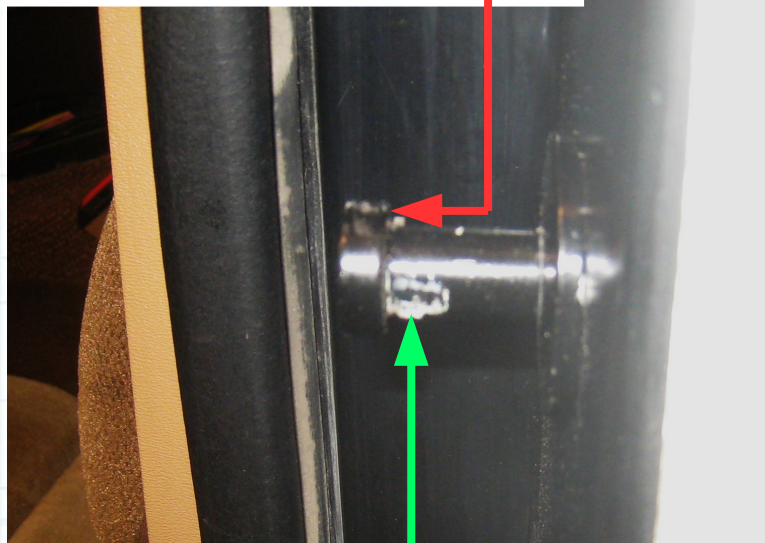
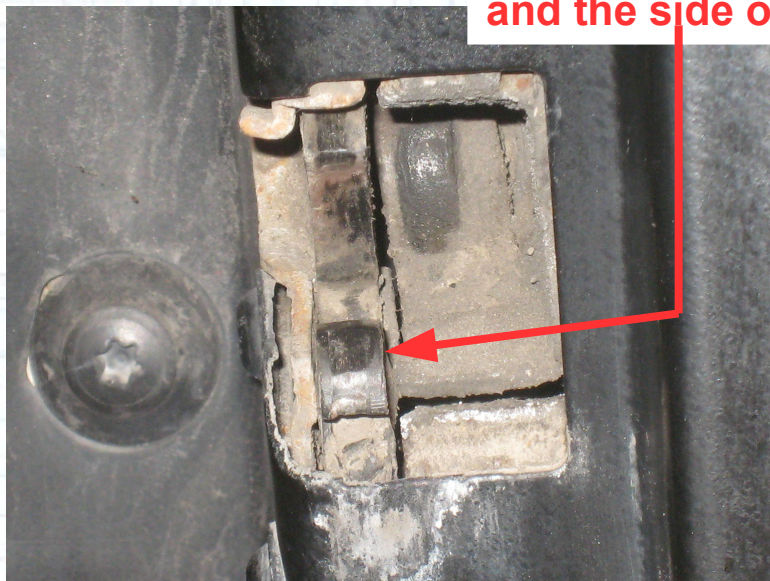




# Fiero Store Striker (pt. 3)

- By gently closing the door, the Liquid Paper imprint of the latch can be observed on the striker

Friction between the bottom of the striker head and the side of the latch



Liquid Paper imprint from latch

# Conclusions/Questions

## Conclusions

- Fiero Store striker is shorter than the factory striker.
- This causes excess friction due to unwanted contact.
- Fiero Store striker appears not to fit on my car.

## Questions

- Was I sent the right parts?
- Did different year Fieros have different strikers?
- Are Fiero Store strikers really GM originals, or reproductions?